

VN
HEIGHTS

2 BHK Lifestyle
Apartment



VVN
HEIGHTS

2 BHK Lifestyle
Apartment



VN
HEIGHTS

2 BHK Lifestyle
Apartment



VN
HEIGHTS
2 BHK Lifestyle
Apartment



SPECIFICATIONS :

- Structure : R.C.C. frame structure as per Structural Engineer's design.
- Interior Finish : Mala plaster with wall care putty.
- Exterior Finish : Texture with weather coat paint.
- Flooring : 2 feet x 2 feet Vitrified tile flooring.
- Kitchen : Granite Modular Platform with SS Sinks, Ceramic up to lintel level.
- Doors : Decorative Main door and all flush door.
- Windows : Aluminum windows with mosquito net and safety grill.
- Electrification : ISI Copper wiring with sufficient electrical points Incl. T.V., A.C., & Geyser in toilets with modular type switches.
- Water Supply : 24 Hours water supply from tube well pump - overhead tank.
- Elevator : Elevator of standard make with capacity of 5 persons for easy access.
- Parking : Adequate parking facilities with paver block.
- Plumbing : CPVC Pipe and brass C.P fixtures.
- Sanitary : PVC Pipes and branded sanitary.
- Paint : Three coat wall putty with primer.

PAYMENT TERMS :

- 35 % at the time of booking
- 20 % at the time of 1st floor slab level
- 20 % at the time of 3rd floor slab level
- 15 % at the time of terrace slab level
- 08 % at the time of plaster & flooring
- 02 % at the time of possession

TYPICAL FLOOR



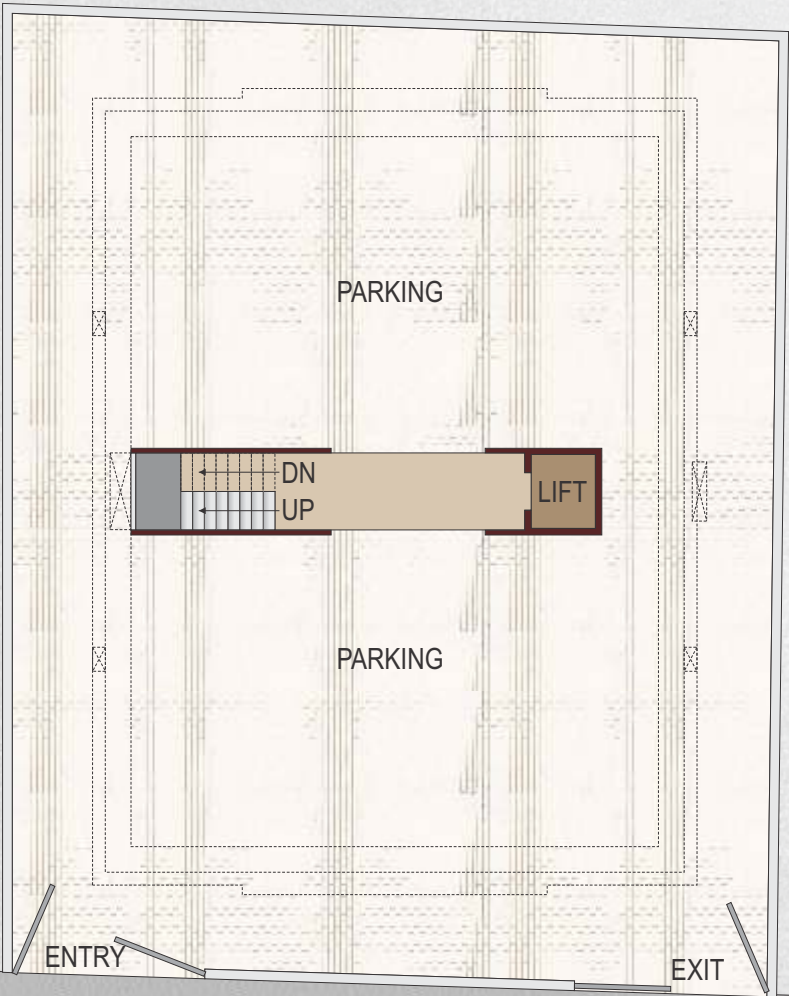
ENTRY

EXIT

ROAD



GROUND FLOOR



ENTRY

EXIT

ROAD